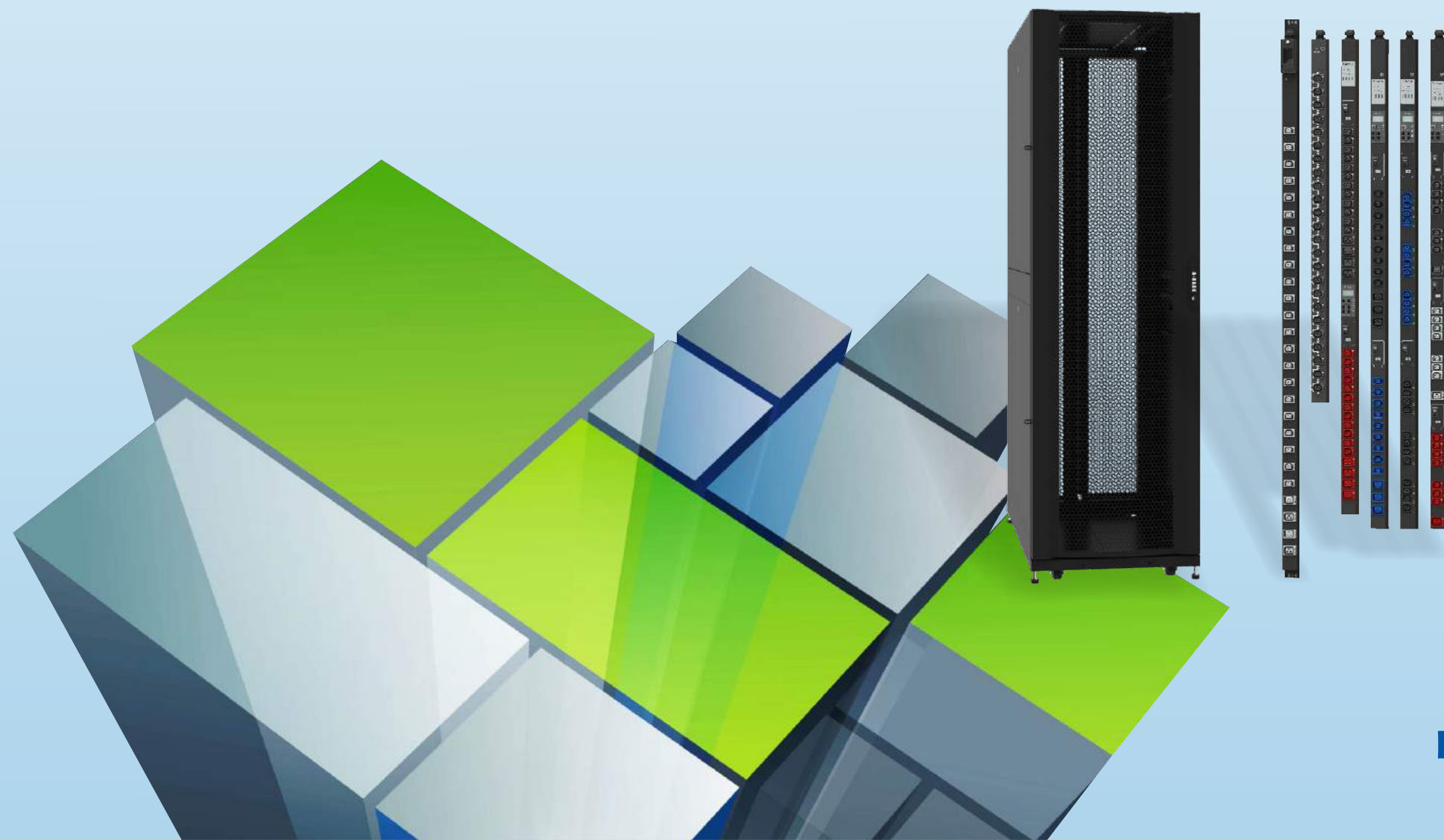




THE RACK THAT WORKS

TOTAL PRODUCT SOLUTIONS FOR
DATA CENTERS & SERVER ROOMS



RakworX, Inc.

17 Hammond Suite 404 Irvine, CA 92618
Tel: 949-215-1362 Fax : 949-215-1368
sales@rakworx.com
www.rakworx.com



Netkey® Cabinet Systems

Rackmate® Accessories

Rakaisle™ Containment Solutions

RakworX™ PDU

⋮

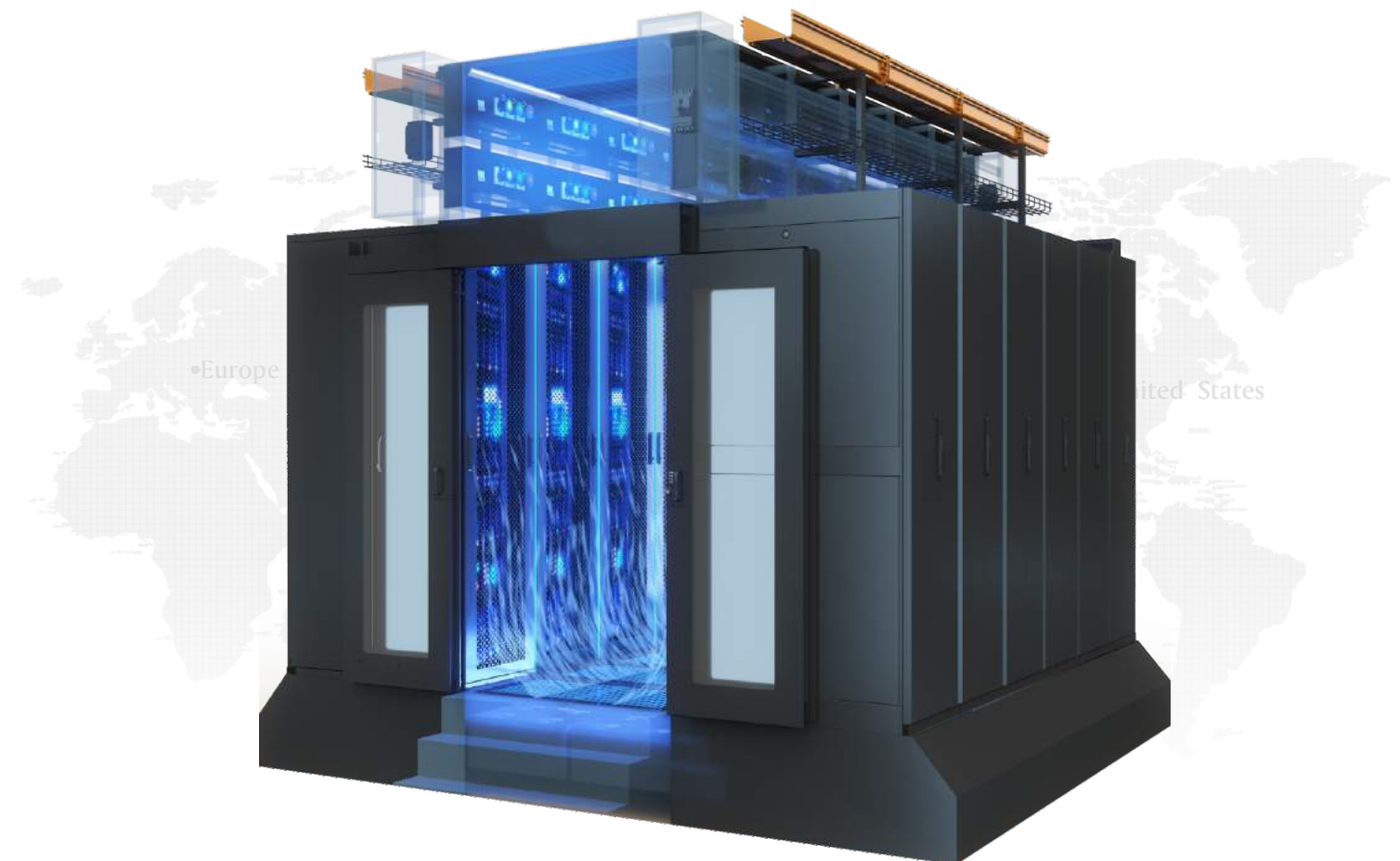
RakworX Netkey Rack Systems

High-density server and networking applications demand a rack infrastructure that can mount a mix of different equipment and support high-capacity cable management in an efficient and flexible design.

RakworX Netkey Rack Systems

Trends like virtualization, consolidation, convergence, and blade server adoption are forcing different types of equipment to share the same high-density server and networking application. These industry trends demand a rack infrastructure that can mount a mix of different types of equipment supporting high-capacity cable management in an efficient and flexible design for rapid deployment. Today's high-end or high density devices also generate tremendous amounts of heat. Rapidly changing business conditions require the IT environment to adapt and adjust faster than ever. The imperative of uninterrupted uptime now has the inevitable demand of efficiency.

Whether it's a network closet, a server room, or a data center of any size, IT operations rely on racks for support, organization, and management of the rack-mount equipment. As a result, RakworX has engineered rack products and accessories to accommodate a larger quantity and a greater variety of IT equipment in a single or multiple rack solution. Our solutions allow IT operators to seamlessly integrate their organization's servers, storage, switches, routers, rack power distributions units, console port servers, KVM's, and other high-end technology equipment.



RakworX Netkey Rack System

RakworX ACG Enclosure

Support remote patching and networking applications in a convenient wall-mount rack with an easy-install rear-hinged section and reversible doors.

- ACG1301 — 13U x 580mm (23in.) wide x 630mm (25in.) deep, wall-mount enclosure with vented sides and glass front door.



Open Frame Racks

RakworX two- and four-post open frame racks. The RakworX two- and four-post open frame racks offer a quality solution for the economical installation of rack-mountable equipment, where security at the individual rack level is not required. Open frame racks provide unobstructed airflow and fast, easy access to installed equipment, and can be paired with high-density vertical cable managers for maximum cable volume. The two-post rack offers cost-conscious customers a simple solution for supporting networking equipment and patching applications. The four-post rack offers more strength and features for supporting servers and networking equipment.

Recent improvements to the four-post racks increase cable management options and flexibility.

Vertical Cable Management

- Unassembled option for site assembly
- Fits two- and four-post open frame racks
- Cable management backplate for tool-less mounting cable management accessories
- ACK62080-14 — 872.4mm height x 600mm (23in.) width, single-sided
- ACK62080-25 — 1361.3mm height x 600mm (23in.) width, double-sided
- ACK62080-42 — 2117mm height x 600mm (23in.) width, single-sided



RakworX ACS Enclosure Features

More Standard Features For Faster Installation

Cable Access Roof

- Eight cable entry slots
- Tool-less mounting of overhead cable trough system
- Snap-in mounting to allow easy roof removal and installation with cables in place

Integrated Baying Brackets

- Preinstalled on frame, front and back
- Spacing options at 600mm (24in.)
- Bays with other RakworX power and cooling products

Preinstalled Leveling Feet And Castors

- Easily adjustable leveling feet from top to down
- Castors standard on all enclosures

Tool-less, Zero-U Accessory Channel

- Tool-less mount rack PDUs
- Tool-less mount vertical cable organizers

Easily Adjustable Vertical Mounting Rails

- Simple screw and cam engagement
- Captive screws — no loose hardware
- Easy visual alignment for quick adjustment
- Adjust in 6mm (0.25in.) increments through enclosure
- Hole cutouts for 0U installation of Data Distribution Cable (DDC) accessories

Half-height Side Panels

- Easy and safe handling
- Quick release latch
- Lockable — same key as doors
- Enclosure width remains the same with or without sides attached

Other Standard Features Include:

- Integrated electrical bonding of sides, doors, roof, and rails to frame
- Ventilated front and rear doors
- Split ventilated rear doors for better clearance in hot aisle
- Numbered U positions front and back
- Open bottom for unobstructed under-floor access
- 1,365kgs (3,000lbs.) static (leveling feet) load, 1,025kgs (2,250lbs.) dynamic (castor) load
- UL Listed
- 482.6mm (19in.) rack-mount standard compliant

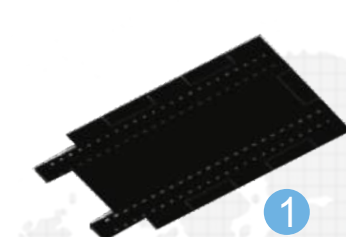


RakworX Netkey Networking Enclosure

Optimized RakworX SX design for enhanced networking application support and a superior solution for side airflow Cisco Nexus®, Catalyst®, and MDS networking switches.

Cable Access Roof

- Extra-large cable access slots for high-density cabling and brush strips for air containment
- Two spring-loaded pins allow easy roof removal and installation with cables in place



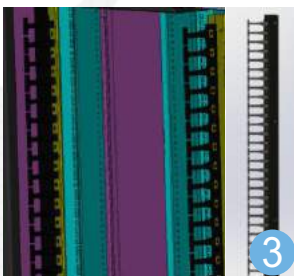
Networking-style Mounting Rails

- Easily align rails that adjust in 6mm (0.25in.) increments
- Left vertical mounting rail contains additional cable channel
- Rail position preset to accommodate Cisco switches and cable management



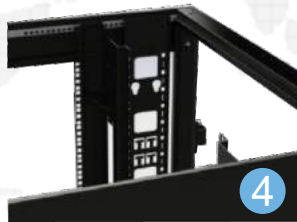
Preinstalled Vertical Cable Managers

- Front vertical mounting rails feature preinstalled, single-sided vertical cable managers
- Smooth plastic fingers provide proper bend radius for cables



Vertical Mounting Rails For Side-To-Side Airflow

- Front-right vertical mounting rail open for improved side airflow



Tool-less Accessories

Vertical Cable Management

RakworX specializes in tool-less-install accessories by the use of the zero-U channels located in the rear of every RakworX SX enclosure.

1 Vertical 0U Accessory Channels

- Allows tool-less mounting of vertical rack PDUs
- Tool-less mount vertical cable organizers
- Additional vertical 0U accessory channels:
 - 900-00043: Vertical 0U accessory channel, 42U, qty. 2
 - 900-900022: Vertical 0U accessory channel, 47U, qty. 2

2 RM88014—Vertical Cable Organizer, Eight Cable Rings, Zero U

- Supports 35 to 55 CAT 6/CAT 6A data cables
- Mounts tool-less on the vertical 0U accessory channel

3 402-70017—Vertical Fiber Organizer

- Installs tool-less
- Takes up one bay of channel
- Fiber spool only kit available

4 RM70017—Data Distribution 0U SX Panel

- Installs tool-less
- Takes up one bay of channel
- Tool-less mount up to four DDC cable heads, 24 ports for rack-to-rack connections



RM88014



402-70017



RM70018



RM70017

RakworX Rackmate Cable Management

Horizontal Cable Managers

Finger-type Horizontal Cable Managers

Cable managers for patching and crossover applications featuring smooth radius plastic fingers that protect the cable from kinking and binding. Hinged, snap-on covers provide a clean look and retain large cable bundles. Cable managers with 152mm (6in.) large cable bundles. These cable managers include hardware for double-sided configurations with two units.

- RM86016 — 4U horizontal cable manager with snap-on cover
- RM86017 — 2U horizontal cable manager with snap-on cover
- RM86018 — 1U horizontal cable manager with snap-on cover
- RM86019 — 2U horizontal cable manager with 152mm (6in.) fingers and snap-on cover



Ring-type Horizontal Cable Managers

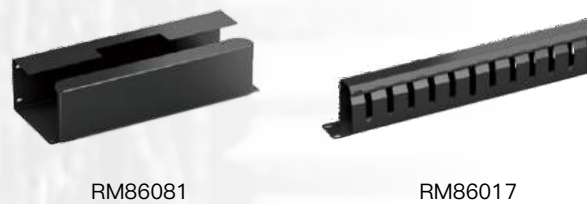
Economical cable managers for patching applications featuring various configurations to meet specific needs.

- RM86005 — 1U horizontal cable manager with four rings
- RM86006 — 2U horizontal cable manager with four rings
- RM86008 — 2U horizontal cable manager with four rings and pass-through holes



Horizontal Cable Management Accessories

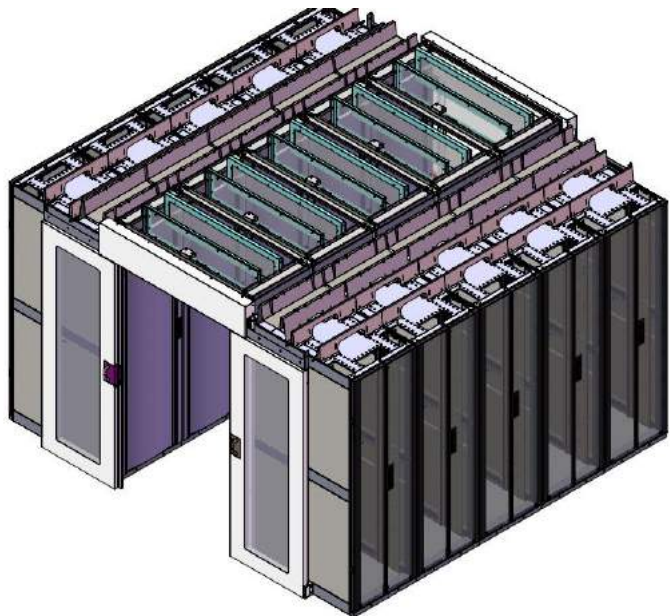
- RM86081 — Horizontal cable side channel 450mm (18 in.) to 750mm (30in.) adjustment) for routing cable front-to-back between the standard wide rack mounting rails horizontal cable managers



RakworX Rackmate Cable Management

Overhead Cable Troughs And Partitions

- RakworX enclosures feature the ability to integrate a system of troughs and partitions for routing power and structured cabling across the top of the enclosures
- Troughs and partitions reduce the need for expensive suspended cable tray systems
- Troughs and partitions install tool-less with snap-in tabs and have standard attachment points for cable ladder systems
- Enclosure troughs are only shown here; for information on power and cooling troughs and partitions, see the RakworX website



Power Cable Trough

- Supports power distribution cables
- Provides separation from data cables
- Data cables pass through underneath to front partitioned area
- RM87601 — Cable trough, 600mm (24in.) racks
- RM87801 — Cable trough, 800mm (32in.) racks

Pass-through Data Cable Partition

- Partitions the top of the enclosure into cable routing areas
- Pass-through hole provides cable access into multiple cable areas
- RM85601 — Pass-through data partition, 600mm (24 in.) enclosures
- RM85801 — Pass-through data partition, 800mm (32 in.) enclosures

Cable Ladders And Accessories

Cable ladders and attachment kits for routing power and data cabling overhead from rack to rack.



Name Description	Model
Cable Ladder 150mm (6in.) (RM83312 150mm (6in.) ladder with attachment kit)	RM83312-1
Cable Ladder 300mm (12in.) (RM83312 300mm (12in.) ladder with attachment kit)	RM83312-2
Alternate Mounting — Ladder to Power Troughs	RM83312-3
Alternate Mounting — Ladder to Data Partitions	RM83312-4
Ladder Elevation Bracket	RM83312-5
Ladder to Two-Post Rack	RM83312-6
Ladder Wall Termination	7010
Ladder Clamp Kit	7012
Ladder Corner Clamp	7013
Ladder Angle Clamp	7014

Solid Data Cable Partition

- Partitions the top of the enclosure into cable routing areas
- Solid face provides clean appearance at the front of the rack
- RM85602 — Solid data partition, 600mm (24in.) racks
- RM85802 — Solid data partition, 750mm (32in.) racks



Rackmate Shelves And Mounting Hardware

Mounting accessories to aid in the installation of IT equipment and secure racks into position.

Shelving

Fixed and sliding shelves to enable the mounting of tower units, monitors, and other equipment into the rack environment.

- RM84001 — Fixed shelf 22.7kgs (50lbs.)
- RM84002 — Fixed shelf 114kgs (250lbs.)
- RM84003 — Sliding shelf 45.5kgs (100lbs.)
- RM84006 — Sliding shelf 250kgs (200lbs.)
- RM84008 — Double side fixed shelf for two-post rack
- RM84011 — 19 in. sliding rotating keyboard shelf
- RM84012 — Misc. equipment support rails for 600 mm (24in) wide rack

Bolt-down And Stabilization

Stabilization plates and hardware to prevent tip-over in stand-alone rack applications and meet specific anchoring requirements.

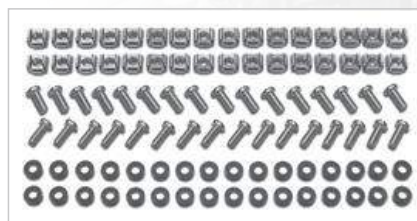
- 900-900017 — RakworX Rackmate bolt-down kit — meets IBC® seismic requirements for moderate seismic zones
- 900-900018 — RakworX Rackmate stabilization plate to prevent tipping when sliding out equipment



Hardware Kits

Available for additional hardware needs or to accommodate equipment mounted in varying mounting options.

- AM-900006 — M6 cage nuts, screws and washers
- 400-00023 — M6X16 screws, qty. 40
- 400-00024 — M6 cage nuts, qty. 40
- 800-00009 — M6 plastic washers, qty. 40

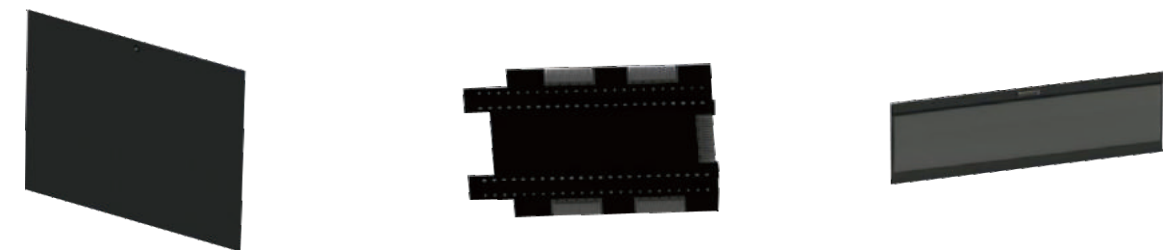


AM-900006

RakworX Accessories

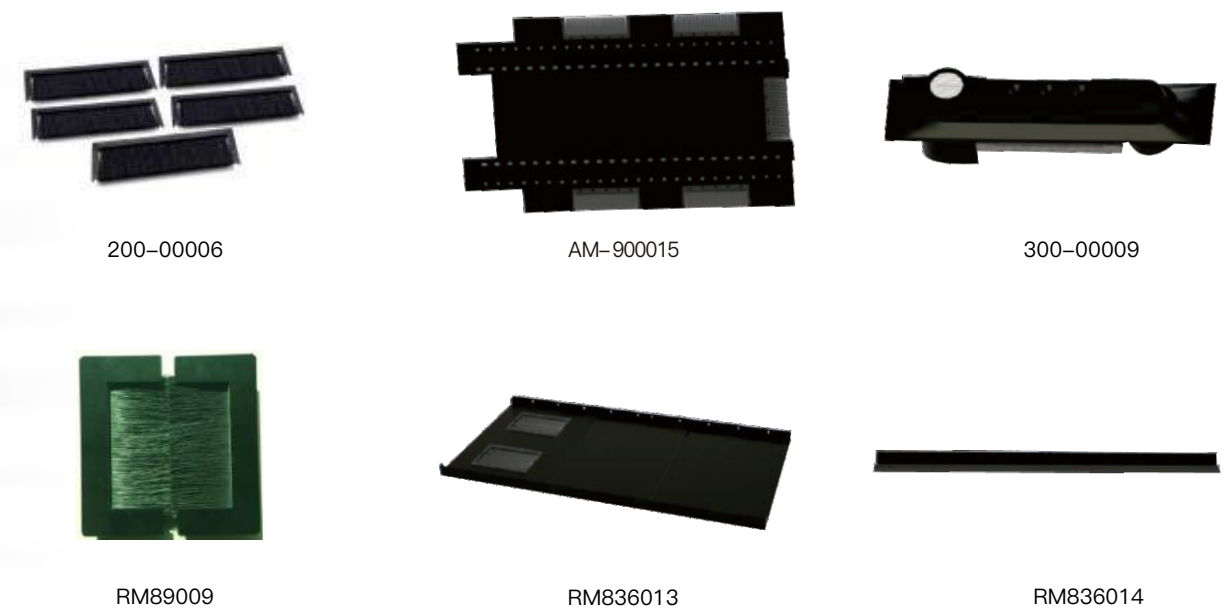
Replacement Doors, Side Panels, Roofs

Standard doors, side panels, and roofs are available for all rack sizes. Check the rack product page options tab for a list of these rack components.



Specialty Roofs, Side Panels, And Accessories

- AM-900015 — RakworX Rackmate roof for high-density cabling 750mm (30in.) wide x 1,070mm (42in.) deep
- AM-900047 — RakworX Rackmate pass-through side panel 42U x 1,070mm (42in.) deep
- AM-900049 — RakworX Rackmate pass-through side panel 42U x 1,200mm (47.5in.) deep
- AM-900064 — RakworX Rackmate pass-through side panel 45U x 1,070mm (42in.) deep
- AM-900066 — RakworX Rackmate pass-through side panel 45U x 1,200mm (47.5in.) deep
- 300-00009 — Combination lock handle for RakworX Netkey racks, qty. 2
- RM-89009 — Integral raised floor grommet (enclosed) for new installation, 10 pk



RakworX Netkey ACR Features

Essential Features For Faster Installation

RakworX racks offer the most standard features to facilitate installation and speed of deployment.

1 Cable Access Through Roof And Rack Bottom

- Large openings for cables to pass through. Four brushes are pre-installed on 800 mm wide versions
- Front opening includes removable panel. The rear is always open but can be covered with brush strips

2 The Middle Line Of The Brush Assembly (800mm only)

- Front and rear equipment mounting rails are fully adjustable
- Over the line and blocking
- 800mm wide versions allow for devices to be vertically mounted between the rail and side panel

3 Line Finger

- Installed at the front door of the rack
- Front door is reversible
- Rear doors are reversible

4 Fiber Spool

- Installs tool-less
- Take up one bay of channel
- Fiber spool only kit available



RakworX Rackmate Cable

Air Sealing

Covers open rack space to prevent air recirculation and reduce bypass airflow to improve cooling efficiency.

- RM89005 — 1U tool-less snap-in blanking panel
- RM89010 — 1U tool-less snap-in blanking panel
- RM89007 — 1U standard metal blanking panel
- RM89008 — RakworX SX external air sealing kit seals external openings at roof and floor, 10pk

Side Airflow Cooling

Support cooling for small and large networking switches mounted within networking enclosures.

- Consists of two duct assemblies that act as diverters, utilizing the existing fan power of the switch
- Systems of baffles are located throughout the enclosure to mitigate exhaust air from recirculating back into the air intake
- AM7001 (42U)/AM7002 (48U) — Side airflow solution for Cisco Nexus attaches to sides of 1,200mm (47.5in.) deep enclosures

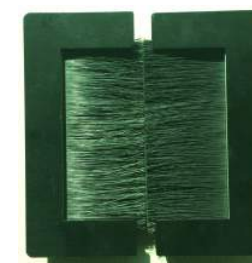
Ducting Only

Vertical Exhaust Duct (VED) for RakworX SX is an easy-to-install, low-cost cooling option that can increase the efficiency of the attached cooling system.

- RM80612 — VED for 600mm (24in.) enclosures, short range
- RM80613 — VED for 600mm (24in.) enclosures, tall range
- RM80614 — VED for 750mm (30in.) enclosures, short range
- RM80615 — VED for 750mm (30in.) enclosures, tall range
- RM80616 — Overhead cable extension for VED 600mm (24in.)
- RM80617 — Overhead cable extension for VED 750mm (30in.)



RM80612
Installed on ACS with
cable management



RM89009



RM89007

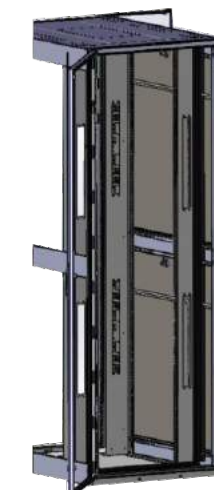


RM89005

KoldLok® Raised Floor Grommets

Seal a variety of cutouts in a raised floor environment to reduce cold air leakage and improve cooling efficiency under the raised floor.

- RM89009 — Integral raised floor grommet (enclosed) for new installation, 10 pk
- RM89010 — Surface-mount raised floor grommet (split) for existing cables, 10 pk
- RM89011 — Extended raised floor grommet to cover length of floor tile, 10 pk



Energy Management Solutions

The RakworX family of enterprise-grade rack PDUs includes comprehensive power management, amp-hour energy metering, and environmental monitoring all within the industry’s slimmest space-saving design. A large selection of standard and configurable PDU options is available to meet your specific rack power distribution strategy.

AP Series Intelligent Rack PDU

Metered PDU (AP2000/ AP5000 Series)

Metered PDU’s offer real-time power metering of connected loads. The ability to monitor the power consumption of connected devices, provides overload protection, load balancing, and energy use optimization.

Metered, Outlet Switched PDU (AP6000 Series)

Remote outlet on/off switching for power-up sequencing, remote power cycling, and outlet use management combined with all features of the AP5000 Series.

Outlet Metered PDU (AP7000 Series)

Individual outlet power and energy metering combined with all features of the AP5000 Series.

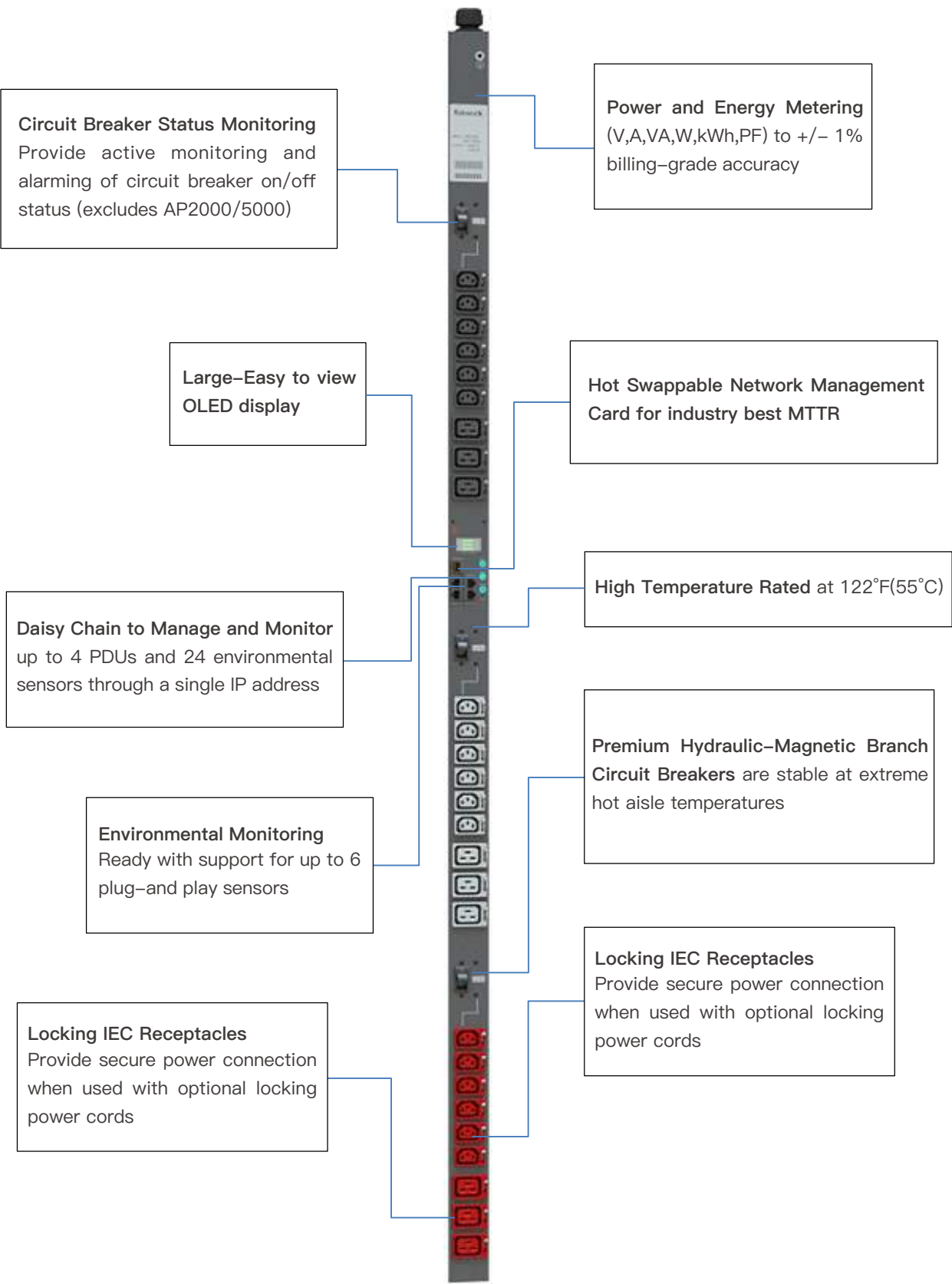
Outlet Metered, Outlet Switched PDU (AP8000 Series)

Comprehensive management solution includes features of both the AP6000 and AP7000 Series.

Product Features

Product features	AP2000	AP5000	AP6000	AP7000	AP8000
◆ PDU level power measurement and monitoring	✓	✓	✓	✓	✓
• Total Energy (kW/h)					
• Total Power(W)					
• Each phase power parameters metering(V,A,VA,W,PF)					
• CB Ampere monitoring			✓		✓
◆ Outlet level Switching					
• Remote on/off switching for each individual outlet					
• Allows					
• Reboot action to recover hung equipment, remote servers, etc.					
• User defined start up sequencing					
• Internal access controls					
◆ Outlet level power measurement and monitoring				✓	✓
• Energy metering for each outlet(kW/h)					
• Power parameters for each outlet(V, A, VA, W, kWh, PF)					
◆ Ethernet network		✓	✓	✓	✓
◆ Modbus	✓				
◆ Embedded system , web log in		✓	✓	✓	✓
◆ User defined alarm threshold and inform	✓	✓	✓	✓	✓
◆ Local Display Visibility	✓	✓	✓	✓	✓
◆ Daisy chain capability	✓	✓	✓	✓	✓
◆ Locking IEC receptacles	✓	✓	✓	✓	✓
◆ Environmental Monitoring Sensors	✓	✓	✓	✓	✓
◆ Product customization capability	✓	✓	✓	✓	✓
• Short lead time customization capability					

Product Features



Product Range

AP1000 Series

SKU #	Δ/Y	Factor	Power Rating	Input		Output						
				Line Current (A)	Phase Current(A)	Line Voltage(V)	Phase Voltage(V)	Input Connection	Output Total			
									Voltage(V)	C13(pcs)	C19(pcs)	5–20R(pcs)
1 PHASE												
AP1011	1PH	0U	2.0–4.8kW	20A (16A derated)	20A (16A derated)	200–240	200–240	C19/L6–20P	200–240	18	2	
AP1012	1PH	0U	2.0–2.4kW	20A (16A derated)	20A (16A derated)	100–120	100–120	C19/L5–20P	120			24
AP1013	1PH	0U	6.0–7.2kW	30A (24A derated)	30A (24A derated)	200–240	200–240	L6–30P	200–240	36	6	
AP1015	1PH	0U	3.0–3.6kW	30A (24A derated)	30A (24A derated)	100–120	100–120	L5–30P	120			24
AP1016	1PH	0U	6.0–7.2kW	30A (24A derated)	30A (24A derated)	200–240	200–240	L6–30P	200–240	24	4	
AP1017	1PH	0U	3.52–3.84kW	16A	16A	220–240	220–240	IEC309 16A	220–240	24		
AP1018	1PH	0U	7.1–7.68kW	32A	32A	220–240	220–240	IEC309 32A	220–240	36	6	
AP1181	1PH	1U	1.6–3.8kW	20 (16A derated)	20 (16A derated)	200–240	200–240	C19/L6–20P	200–240	8	–	–
AP1182	1PH	1U	1.6–1.92kW	20A (16A derated)	20A (16A derated)	100–120	100–120	C19/L5–20P	100–120	–	–	8
AP1283	1PH	2U	7.0–7.7kW	32A	32A	220–240	220–240	IEC309	220–240	12	4	–
AP1285	1PH	2U	4.8–5.8kW	30A (24A derated)	30A (24A derated)	200–240	200–240	L6–30P	220–240	12	4	–
AP1286	1PH	2U	2.4–2.88kW	30A (24A derated)	30A (24A derated)	100–120	100–120	L5–30P	100–120	–	–	16
3 PHASE												
AP1051	3PH Δ	0U	7.2kW	20A (16A derated)	12A (10A derated)	208	208	L15–20P	208	18	6	
AP1052	3PH Y	0U	20A,14.4kW	20A (16A derated)	20A (16A derated)	415	240	IEC309	240	18	6	
AP1053	3PH Y	0U	21.6kW	30A (24A derated)	30A (24A derated)	415	240	IEC309	240	24	12	
AP1055	3PH Δ	0U	10.8kW	30A (24A derated)	18A (15A derated)	208	208	L15–30P	208	24	6	
AP1056	3PH Δ	0U	18.0kW	50A (40A derated)	29A (24A derated)	208	208	CS8365	208	6	12	
AP1057	3PH Δ	0U	21.6kW	60A (48A derated)	35A (28A derated)	208	208	IEC309	208	6	12	

AP2000 Series

SKU #	Δ/Y	Factor	Power Rating	Input		Output						
				Line Current (A)	Phase Current(A)	Line Voltage(V)	Phase Voltage(V)	Input Connection	Output Total			
									Voltage(V)	C13(pcs)	C19(pcs)	5–20R(pcs)
1 PHASE												
AP2011	1PH	0U	2.0–4.8kW	20A (16A derated)	20A (16A derated)	200–240	200–240	C19/L6–20P	200–240	18	2	
AP2012	1PH	0U	2.0–2.4kW	20A (16A derated)	20A (16A derated)	100–120	100–120	C19/L5–20P	120			12
AP2013	1PH	0U	6.0–7.2kW	30A (24A derated)	30A (24A derated)	200–240	200–240	L6–30P	200–240	36	6	
AP2015	1PH	0U	3.0–3.6kW	30A (24A derated)	30A (24A derated)	100–120	100–120	L5–30P	120			24
AP2016	1PH	0U	6.0–7.2kW	30A (24A derated)	30A (24A derated)	200–240	200–240	L6–30P	200–240	24	4	
AP2017	1PH	0U	3.52–3.84kW	16A	16A	220–240	220–240	IEC309 16A	220–240	24		
AP2018	1PH	0U	7.1–7.68kW	32A	32A	220–240	220–240	IEC309 32A	220–240	36	6	
AP2181	1PH	1U	1.6–3.8kW	20 (16A derated)	20 (16A derated)	200–240	200–240	C19/L6–20P	200–240	8	–	–
AP2182	1PH	1U	1.6–1.92kW	20A (16A derated)	20A (16A derated)	100–120	100–120	C19/L5–20P	100–120	–	–	8
AP2283	1PH	2U	7.0–7.7kW	32A	32A	220–240	220–240	IEC309	220–240	12	4	–
AP2285	1PH	2U	4.8–5.8kW	30A (24A derated)	30A (24A derated)	200–240	200–240	L6–30P	220–240	12	4	–
AP2286	1PH	2U	2.4–2.88kW	30A (24A derated)	30A (24A derated)	100–120	100–120	L5–30P	100–120	–	–	16
3 PHASE												
AP2051	3PH Δ	0U	7.2kW	20A (16A derated)	12A (10A derated)	208	208	L15–20P	208	18	6	
AP2052	3PH Y	0U	14.4kW	20A (16A derated)	20A (16A derated)	415	240	IEC309	240	18	6	
AP2053	3PH Y	0U	21.6kW	30A (24A derated)	30A (24A derated)	415	240	IEC309	240	24	12	
AP2055	3PH Δ	0U	10.8kW	30A (24A derated)	18A (15A derated)	208	208	L15–30P	208	24	6	
AP2056	3PH Δ	0U	18.0kW	50A (40A derated)	29A (24A derated)	208	208	CS8365	208	6	12	
AP2057	3PH Δ	0U	21.6kW	60A (48A derated)	35A (28A derated)	208	208	IEC309	208	6	12	

Product Range

AP5000 Series

SKU #	Δ/Y	Factor	Power Rating	Input		Output						
				Line Current (A)	Phase Current(A)	Line Voltage(V)	Phase Voltage(V)	Input Connection	Output Total			
									Voltage(V)	C13(pcs)	C19(pcs)	5–20R(pcs)
1 PHASE												
AP5011	1PH	0U	2.0–4.8kW	20A (16A derated)	20A (16A derated)	200–240	200–240	C19/L6–20P	200–240	18	2	12
AP5012	1PH	0U	2.0–2.4kW	20A (16A derated)	20A (16A derated)	100–120	100–120	C19/L5–20P	120			
AP5013	1PH	0U	6.0–7.2kW	30A (24A derated)	30A (24A derated)	200–240	200–240	L6–30P	200–240	36	6	24
AP5015	1PH	0U	3.0–3.6kW	30A (24A derated)	30A (24A derated)	100–120	100–120	L5–30P	120			
AP5016	1PH	0U	6.0–7.2kW	30A (24A derated)	30A (24A derated)	200–240	200–240	L6–30P	200–240	24	4	
AP5017	1PH	0U	3.52–3.84kW	16A	16A	220–240	220–240	IEC309 16A	220–240	24		
AP5018	1PH	0U	7.1–7.68kW	32A	32A	220–240	220–240	IEC309 32A	220–240	36	6	–
AP5181	1PH	1U	1.6–3.8kW	20 (16A derated)	20 (16A derated)	200–240	200–240	C19/L6–20P	200–240	8	–	8
AP5182	1PH	1U	1.6–1.92kW	20A (16A derated)	20A (16A derated)	100–120	100–120	C19/L5–20P	100–120	–	–	–
AP5283	1PH	2U	7.0–7.7kW	32A	32A	220–240	220–240	IEC309	220–240	12	4	–
AP5285	1PH	2U	4.8–5.8kW	30A (24A derated)	30A (24A derated)	200–240	200–240	L6–30P	220–240	12	4	16
AP5286	1PH	2U	2.4–2.88kW	30A (24A derated)	30A (24A derated)	100–120	100–120	L5–30P	100–120	–	–	
3 PHASE												
AP5051	3PH Δ	0U	20A,7.2kW	20A (16A derated)	12A (10A derated)	208	208	L15–20P	208	18	6	
AP5052	3PH Y	0U	20A,14.4kW	20A (16A derated)	20A (16A derated)	415	240	IEC309	240	18	6	
AP5053	3PH Y	0U	21.6kW	30A (24A derated)	30A (24A derated)	415	240	IEC309	240	24	12	
AP5055	3PH Δ	0U	10.8kW	30A (24A derated)	18A (15A derated)	208	208	L15–30P	208	24	6	
AP5056	3PH Δ	0U	18.0kW	50A (40A derated)	29A (24A derated)	208	208	CS8365	208	6	12	
AP5057	3PH Δ	0U	21.6kW	60A (48A derated)	35A (28A derated)	208	208	IEC309	208	6	12	
AP5058	3PH Δ	0U	10.8kW	30A (24A derated)	18A (15A derated)	208	208	L21–30P	208 110	36	6	2
AP5059	3PH Δ	0U	7.2kW	20A (16A derated)	12A (10A derated)	208	208	L21–30P	208 110	36	6	2

AP6000 Series

SKU #	Δ/Y	Factor	Power Rating	Input		Output						
				Line Current (A)	Phase Current(A)	Line Voltage(V)	Phase Voltage(V)	Input Connection	Output Total			
									Voltage(V)	C13(pcs)	C19(pcs)	5–20R(pcs)
1 PHASE												
AP6011	1PH	0U	2.0–4.8kW	20A (16A derated)	20A (16A derated)	200–240	200–240	C19/L6–20P	200–240	12		
AP6012	1PH	0U	2.0–2.4kW	20A (16A derated)	20A (16A derated)	100–120	100–120	C19/L5–20P	120			12
AP6013	1PH	0U	6.0–7.2kW	30A (24A derated)	30A (24A derated)	200–240	200–240	L6–30P	200–240	20		
AP6015	1PH	0U	3.0–3.6kW	30A (24A derated)	30A (24A derated)	100–120	100–120	L5–30P	120			18
AP6016	1PH	0U	6.0–7.2kW	30A (24A derated)	30A (24A derated)	200–240	200–240	L6–30P	200–240	12	4	
AP6017	1PH	0U	3.52–3.84kW	16A	16A	220–240	220–240	IEC309 16A	220–240	18		
AP6018	1PH	0U	7.1–7.68kW	32A	32A	220–240	220–240	IEC309 32A	220–240	20	4	
AP6181	1PH	1U	2.0–4.8kW	20 (16A derated)	20 (16A derated)	200–240	200–240	C19/L6–20P	200–240	8	–	–
AP6182	1PH	1U	1.6–1.92kW	20A (16A derated)	20A (16A derated)	100–120	100–120	L5–20P	100–120	–	–	8
AP6283	1PH	2U	7.0–7.7kW	32A	32A	220–240	220–240	IEC309	220–240	12	4	–
AP6285	1PH	2U	4.8–5.8kW	30A (16A derated)	30A (16A derated)	200–240	200–240	L6–30P	200–240	12	4	–
AP6286	1PH	2U	2.4–2.88kW	30A (16A derated)	30A (24A derated)	100–120	100–120	L5–30P	100–120	–	–	16
3 PHASE												
AP6051	3PH Δ	0U	7.2kW	20A (16A derated)	12A (10A derated)	208	208	L15–20P	208	18	6	
AP6052	3PH Y	0U	14.4kW	20A (16A derated)	12A (10A derated)	415	240	IEC309	240	18	6	
AP6053	3PH Δ	0U	10.8kW	30A (24A derated)	18A (14A derated)	208	208	L15–30P	208	18	6	
AP6055	3PH Y	0U	21.6kW	30A (24A derated)	30A (24A derated)	415	240	IEC309	240	12	12	
AP6056	3PH Δ	0U	18.0kW	50A (40A derated)	29A (24A derated)	208	208	CS8365	208	3	12	
AP6057	3PH Δ	0U	21.6kW	60A (48A derated)	35A (28A derated)	208	208	IEC309	208	3	12	

Product Range

AP7000 Series

SKU #	Δ/Y	Factor	Power Rating	Input					Output			
				Line Current (A)	Phase Current(A)	Line Voltage(V)	Phase Voltage(V)	Input Connection	Output Total			
Voltage(V) C13(pcs) C19(pcs) 5–20R(pcs)												
1 PHASE												
AP7011	1PH	0U	2.0–4.8kW	20A (16A derated)	20A (16A derated)	200–240	200–240	C19/L6–20P	200–240	12	0	0
AP7012	1PH	0U	2.0–2.4kW	20A (16A derated)	20A (16A derated)	100–120	100–120	C19/L5–20P	120	0	0	12
AP7013	1PH	0U	6.0–7.2kW	30A (24A derated)	30A (24A derated)	200–240	200–240	L6–30P	200–240	20	4	0
AP7015	1PH	0U	3.0–3.6kW	30A (24A derated)	30A (24A derated)	100–120	100–120	L5–30P	120	0	0	18
AP7016	1PH	0U	6.0–7.2kW	30A (24A derated)	18A (24A derated)	200–240	200–240	L6–30P	200–240	12	4	0
AP7017	1PH	0U	3.52–3.84kW	16A	16A	220–240	220–240	IEC309 16A	220–240	18		
AP7018	1PH	0U	7.1–7.68kW	32A	32A	220–240	220–240	IEC309 32A	220–240	20	4	
3 PHASE												
AP7051	3PH Δ	0U	7.2kW	20A (16A derated)	12A (10A derated)	208	208	L15–20P	208	18	6	0
AP7052	3PH Y	0U	14.4kW	20A (16A derated)	20A (16A derated)	415	240	IEC309	240	18	6	0
AP7053	3PH Δ	0U	10.8kW	30A (24A derated)	18A (14A derated)	208	208	L15–30P	208	18	6	0
AP7055	3PH Y	0U	21.6kW	30A (24A derated)	30A (24A derated)	415	240	IEC309	240	12	12	0
AP7056	3PH Δ	0U	18.0kW	50A (40A derated)	29A (24A derated)	208	208	CS8365	208	3	12	0
AP7057	3PH Δ	0U	21.6kW	60A (48A derated)	35A (28A derated)	208	208	IEC309	208	3	12	0

AP8000 Series

SKU #	Δ/Y	Factor	Power Rating	Input					Output			
				Line Current (A)	Phase Current(A)	Line Voltage(V)	Phase Voltage(V)	Input Connection	Output Total			
Voltage(V) C13(pcs) C19(pcs) 5–20R(pcs)												
1 PHASE												
AP8011	1PH	0U	2.0–4.8kW	20A (16A derated)	20A (16A derated)	200–240	200–240	C19/L6–20P	200–240	12	0	0
AP8012	1PH	0U	2.0–2.4kW	20A (16A derated)	20A (16A derated)	100–120	100–120	C19/L5–20P	120	0	0	12
AP8013	1PH	0U	6.0–7.2kW	30A (24A derated)	30A (24A derated)	200–240	200–240	L6–30P	200–240	20	4	0
AP8015	1PH	0U	3.0–3.6kW	30A (24A derated)	30A (24A derated)	100–120	100–120	L5–30P	120	0	0	18
AP8016	1PH	0U	6.0–7.2kW	30A (24A derated)	18A (24A derated)	200–240	200–240	L6–30P	200–240	12	4	0
AP8017	1PH	0U	3.52–3.84kW	16A	16A	220–240	220–240	IEC309 16A	220–240	18		
AP8018	1PH	0U	7.1–7.68kW	32A	32A	220–240	220–240	IEC309 32A	220–240	20	4	
3 PHASE												
AP8051	3PH Δ	0U	7.2kW	20A (16A derated)	12A (10A derated)	208	208	L15–20P	208	18	6	0
AP8052	3PH Y	0U	14.4kW	20A (16A derated)	20A (16A derated)	415	240	IEC309	240	18	6	0
AP8053	3PH Δ	0U	10.8kW	30A (24A derated)	18A (14A derated)	208	208	L15–30P	208	18	6	0
AP8055	3PH Y	0U	21.6kW	30A (24A derated)	30A (24A derated)	415	240	IEC309	240	12	12	0
AP8056	3PH Δ	0U	18.0kW	50A (40A derated)	29A (24A derated)	208	208	CS8365	208	3	12	0
AP8057	3PH Δ	0U	21.6kW	60A (48A derated)	35A (28A derated)	208	208	IEC309	208	3	12	0

System Specifications

- Operating Specifications.
- Temperature: –5°C–55°C/23°F–131°F.
- Relative Humidity: 5–95% (non–condensing).
- Operating Elevation: 0–3,000m/0–9,842ft.

Storage Specifications

- Temperature: –25°C–70°C/–13°F–158°F.
- Relative Humidity: 5–95% (non–condensing).
- Operating Elevation: 0–15,000m/0–49,212ft.

Compliance Specifications

- EMC Verification: EN 55022 Class A , EN 55024, EN 61000–3–2, EN 61000–3–3.
- Safety Verification: CE , UL 60950–1.
- Environmental Verification: ROHS, WEEE.

Accessories

Simplify rack environmental management with RakworX plug and play sensors. Every RakworX Rack PDU (AP5000/6000/7000/8000) is designed to accommodate up to 6 external sensor probes with user customizable alarms and notification. Each sensor is engineered with an embedded analog–digital signal processing microchip for extended range and high accuracy operation. Every sensor probe is factory calibrated and designed for easy installation, setup, and identification.

Environmental Sensors

SKU	Des
AP91001–1T1H	1T/1H sensor
AP91001–3T1H	3T/1H sensor
AP91002	1T/1H sensor + Differential pressure sensor
AP91003	Smoking sensor
AP91004	Alarm
AP91005	Door switch sensor
AP91006	Rope leakage sensor



Power Cord

RakworX locking IEC power cords provide protection against accidental power loss to your attached IT equipment when used with any RakworX PDU. The locking IEC plug fits into the IEC C13 or C19 outlet with a locking tab feature. The patented IT–equipment connector positively locks into the attached equipment power inlet with an internal locking mechanism on the ground earth pin.

SKU	Description	Spec	Length	Color
AP90001	C13–C14 Lock	3x1 mm ²	0.6m(23.62in) 1.2m(47.24in) 1.8m(70.86in) 2.4m(94.48in)	Black, Blue, Red, Yellow, Gray.
AP90002	C13–C14 Lock	3x1.5mm ²		
AP90003	C19–C20 Lock	3x2mm ²		
AP90004	C19–C20 Lock	3x2.5mm ²		
AP90005	China outlet–C14 Lock	IEC 32A 3P6H IP44	1m(39.37in) 2m(78.74in)	Black

